



ESTATE AGENTS

www.cwestateagents.co.uk



## 5A Muskett Drive, Northwich CW8 4YP

Offers in excess of £280,000

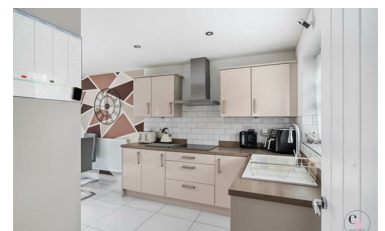
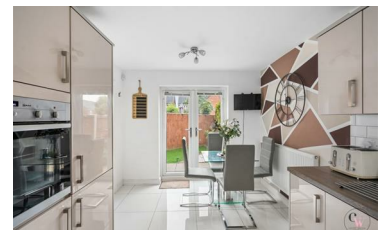


Set within the highly regarded Winnington Urban Village, this exceptional home enjoys a prime position on Muskett Drive, offering a superb balance of community living and everyday convenience. Just a short stroll away is the local shopping parade, served by a Co-op Local and complemented by a fantastic selection of independent businesses including the popular Roman Bar and Eleven, creating a real village feel right on your doorstep.

The area is well served by highly regarded schools for all ages, making it a great choice for families, while excellent commuting links provide easy access to Northwich, surrounding towns and major road networks, as well as regular rail services for commuters.

Constructed in 2018 by the well-respected Morris Homes, this home is the popular and rarely available "Dalton" style, known for its unique design and

- Highly regarded Winnington Urban Village
- Exceptional home enjoys a prime position on Muskett Drive
- Constructed in 2018 by the well-respected Morris Homes, this home is the popular and rarely available "Dalton" style
- Envious corner plot with a private driveway providing off-road parking,
- Beautifully presented with great sized lounge as well as modern kitchen/dining room.
- Utility Room and downstairs cloakroom
- Three great sized bedrooms and stunning en-suite



01606 514 152 info@cwestateagents.co.uk

@CWestateAgent @CWestateAgents